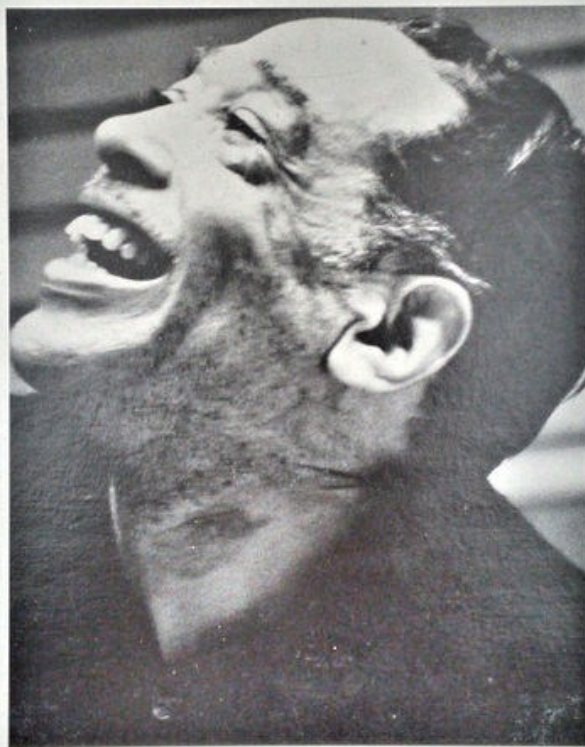


UP-TO-DATE 2009

DUKE ELLINGTON

STUDIO SERIES, VOLUME EIGHT

1933 - 1967



UP-TO-DATE

2009-A

STEREO

1. BLACKBIRDS MEDLEY - PART II
 2. SOPHISTICATED LADY
 3. JUNIOR HOP
 4. CHARLIE THE CHULO
 5. BASIN STREET BLUES (vocal Ray Nance)
 6. UNTITLED
 7. BLUES (vocal Jimmy Grissom)
 8. COMMERCIAL TIME
- Duke Ellington
The Studio Series Volume Eight
1933 - 1967

UP-TO-DATE

2009-B

STEREO

1. BODY AND SOUL
 2. ONCE IN A BLUE
 3. SO LONG (vocal Jimmy Grissom)
 4. BLUES A LA WILLIE COOK
 5. SLO BLUES ENSEMBLE
 6. THREE TRUMPS
 7. FIVE VARIATIONS ON A COMMERCIAL THEME, Number 1
 8. FIVE VARIATIONS ON A COMMERCIAL THEME, Number 2
 9. FIVE VARIATIONS ON A COMMERCIAL THEME, Number 3
 10. FIVE VARIATIONS ON A COMMERCIAL THEME, Number 4
 11. FIVE VARIATIONS ON A COMMERCIAL THEME, Number 5
- Duke Ellington
The Studio Series Volume Eight
1933 - 1967

SIDE ONE

- DUKE ELLINGTON & HIS FAMOUS ORCHESTRA: Duke Ellington, p &ldr; Arthur Whetsol, Cootie Williams, tpts; Joe Nanton, Juan Tizol, Lawrence Brown, tbs; Johnny Hodges, as, ss; Otto Hardwicke, as; Barney Bigard, clt, ts; Harry Carney, bs, as, clt; Fred Guy, g; William Braud, b; Sonny Greer, dms New York - 17 Feb. 1933
BLACKBIRDS MEDLEY - PART II B 13080-6
- [1]
- LARRY ADLER ACC BY DUKE ELLINGTON & HIS FAMOUS ORCHESTRA Larry Adler, jaca acc by Ellington Orch: Same personnel as [1] but add Freddy Jenkins, tpt from soundtrack of Paramount film "Many Happy Returns" Hollywood April 1934
SOPHISTICATED LADY
- [2]
- JOHNNY HODGES AND ORCHESTRA: Cootie Williams, tpt; Lawrence Brown, tbs; Johnny Hodges, as, ss; Harry Carney, bs; Duke Ellington, p; Jimmy Blanton, b; Sonny Greer, dms Chicago - 2 Nov 1940
JUNIOR HOP 051606-1
- [3]
- BARNEY BIGARD AND ORCHESTRA: Ray Nance, tpt; Juan Tizol, vtb; Barney Bigard, clt; Ben Webster, ts; Duke Ellington, p; Jimmy Blanton, b; Sonny Greer, dms Chicago - 11 Nov 1940
CHARLIE THE CHULD 051621-2
- [4]
- DUKE ELLINGTON SEXTET: Ray Nance, tpt, vcl; Quentin Jackson, tbs; Russell Procope, clt; Duke Ellington, p; Wendell Marshall, b; Butch Ballard, dms Chicago - 30 Jun 1953
BASIN STREET BLUES (previously unissued) 11623
- [5]
- DUKE ELLINGTON & HIS FAMOUS ORCHESTRA: Duke Ellington, p &ldr; Clark Terry, Willie Cook, Cat Anderson, Ray Nance, tpts; Quentin Jackson, Britt Woodman, Juan Tizol, tbs; Jimmy Hamilton, Russell Procope, Rick Henderson, Paul Gonzales, Harry Carney, reeds; Wendell Marshall, b; Butch Ballard, dms Chicago - 1 Jul 1953
UNTITLED (previously unissued) 11624
- [6]
- DUKE ELLINGTON & HIS FAMOUS ORCHESTRA: Same as [6] but Jimmy Woode for Marshall(b) & Dave Black for Ballard(dms) Chicago - 17 May 1955
- [7]
- BLUES vocal Jimmy Crissom (previously unissued) 14096
- [8]
- COMMERCIAL TIME (previously unissued) 14097

SIDE TWO

- DUKE ELLINGTON SEPTET: Ray Nance, tpt; Quentin Jackson, tbs; Russell Procope, clt; Paul Gonzales, ts; Duke Ellington, p; Jimmy Woode, b; Dave Black, dms (no no assigned at session) Chicago - 18 May 1955
BOY AND SIBL (previously unissued) 14304
- [1]
- DUKE ELLINGTON SEXTET: Same as [1] but Paul Gonzales, out. Duke Ellington, elec p - Chicago - 19 May 1955
ONCE IN A BLUE (previously unissued) 14103
- [2]
- DUKE ELLINGTON SEPTET: Same as [2] but add Paul Gonzales, ts; Jimmy Crissom vcl same date & location
SO LONG vocal Jimmy Crissom (previously unissued) 14105
- [3]
- DUKE ELLINGTON & HIS GROUP: Ray Nance, Willie Cook, tpts; Duke Ellington, p; Jimmy Woode, b; Sam Woodyard, dms Chicago - 29 Jan 1957
BLUES A'LA WILLIE COOK (previously unissued)
- [4]
- ADD Paul Gonzales, ts; same date & location
- [5]
- SIX BLUES ENSEMBLE (previously unissued)
- [6]
- Paul Gonzales, out; add Clark Terry, tpt Same date & location
THREE TRUMPS (previously unissued)
- [7]
- DUKE ELLINGTON AND HIS ORCHESTRA: Duke Ellington, p &ldr; Cootie Williams, Cat Anderson, Herbie Jones, Mercer Ellington, tpts; Lawrence Brown, Chuck Coxson, Buster Cooper, tbs; Jimmy Hamilton, Russell Procope, Johnny Hodges, Paul Gonzales, Harry Carney, reeds; Aaron Bell, b; Steve Little, dms N.Y. Sep 1967
FIVE VARIATIONS ON A COMMERCIAL THEME
- [7 through 11]

Note: the above five musical cuts are variations on a special theme composed by Ellington to be used as background for radio/television commercials by "Hot Shoppers"

IMPORT THIS RECORD HAS BEEN PRESSED OUTSIDE OF THE UNITED STATES

UP-TO-DATE RECORDS ARE NOT SOLD IN STORES IN THE UNITED STATES